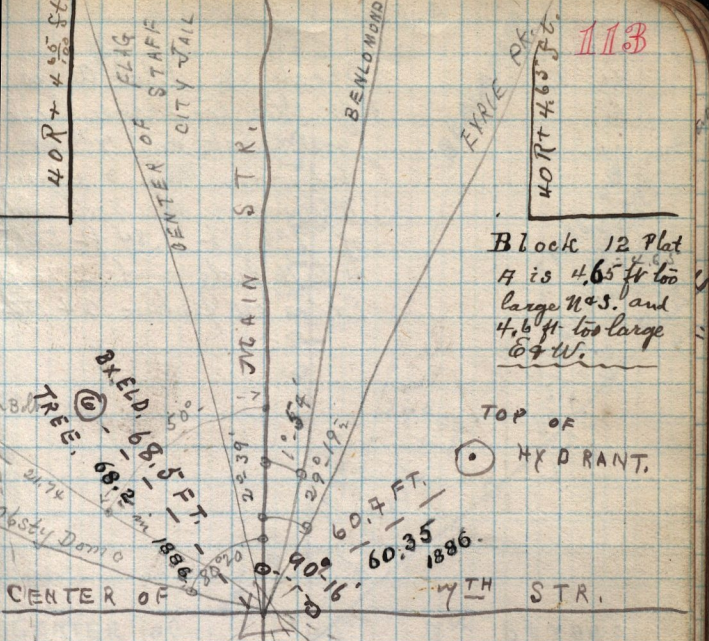


113

40R + 4 9/100 ft.

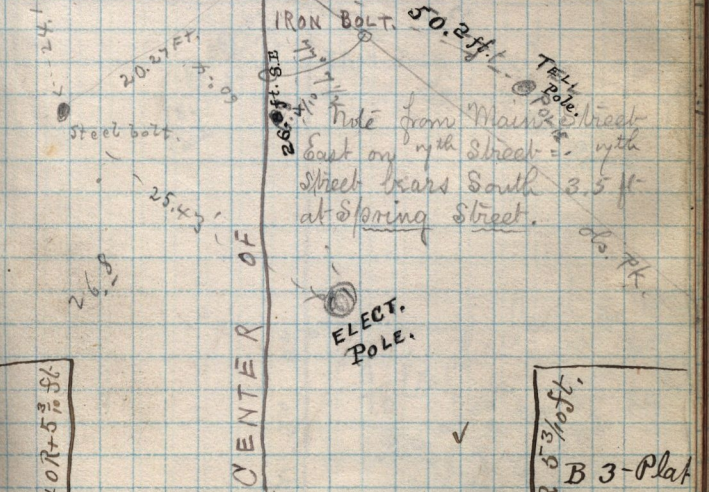
40R + 4 63/100 ft.



Block 12 Plat A is 4.65 ft too large N.E. and 4.6 ft too large E.W.

TOP OF HYDRANT.

WYTH STR.



Note from Main Street East on Wyth Street - Wyth Street bears South 3.5 ft at Spring Street.

ELECT. POLE.

40R + 5 3/100 ft.

40R 5 3/100 ft.
B 3-Plat
a. =

WV. 19-1884